

For many years, Sony has offered feature-rich surveillance cameras to users who seek customized solutions for a variety of security applications. Now, Sony unveils two new color video cameras – the SSC-G913 and the SSC-G918 – which add newly developed benefits, customized functions, and operational flexibility to the current SSC Series.

Equipped with a 1/3-type CCD with DynaViewEX technology, the SSC-G913/G918 produces 540 TV-line images for faithful reproduction of the subject. Moreover, it offers numerous beneficial features such as Optical Day/Night, Noise Reduction, BLC, Privacy Zone Masking, and Custom Templates. The SSC-G913/G918 is sure to be a perfect choice for integration and operation in various locations such as banks, offices, parking lots, subways, and transportation.



## Color Video Camera

## SSC-G913/SSC-G918

### FEATURES

#### Wide Dynamic Range With DynaViewEX Technology

The SSC-G913/G918 incorporates DynaViewEX technology to capture high-contrast scenes and produce clear images even under less-than-ideal lighting conditions. This means it can capture critical information that may have been missed by other cameras without such technology. DynaViewEX technology consists of three sub-technologies:

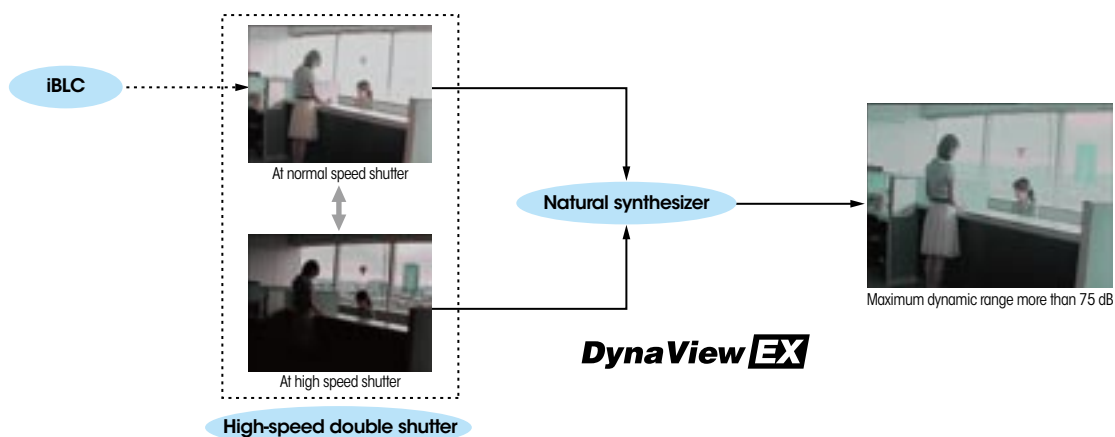
- **High-speed double shutter** uses a wider shutter speed range compared to previous technologies so that the cameras can reproduce images with incredibly wide dynamic ranges.
- **iBLC** compensates for the exposure levels in dark scenes to improve the visibility of the subject.
- **Natural synthesizer** plays an important role in minimizing synthesized noise, which occurs when combining two images of different shutter speeds.

#### Superb Picture Quality With Accurate Color Reproduction

Employing a Super HAD CCD sensor, the SSC-G913/G918 offers a high horizontal resolution of 540 TV lines and produces amazingly clear and detailed images. Moreover, the cameras achieve a minimum illumination of 0.6 lx; therefore, the image quality under low-lighting conditions is great enough to enable round-the-clock security operations.

#### Noise Reduction

The SSC-G913/G918 incorporates Adaptive DNR (Digital Noise Reduction) technology, which eliminates noise and motion blur to produce distinct and clear images. Adaptive DNR technology utilizes both an adaptive 2D filter and an adaptive 3D filter according to the AGC value to reduce noise.



## Optical Day/Night Function

The SSC-G913/G918 cameras offer an Optical Day/Night function to provide optimized sensitivity in both day and night shooting scenarios. As the scene illumination reduces and the acquired image darkens, the infrared filter is automatically removed and the camera switches to B&W mode, requiring only a minimum illumination of 0.06 lx. In addition, the Optical Day/Night function can be initiated on demand through an external control signal for added flexibility.

## Wider Auto Tracing White Range (ATW)

The ATW function automatically adjusts the camera's white balance to adapt to sudden changes in lighting conditions. The SSC-G913/G918 provides an extremely wide ATW range of 2,000 K to 10,000 K, allowing adjustment-free operation under a variety of lighting conditions.

## Back Light Compensation

Unwanted backlighting tends to cause the subject matter of an image to be cast into shadow. The BLC function of these cameras automatically compensates for such undesirable conditions and improves the visibility of the subject.

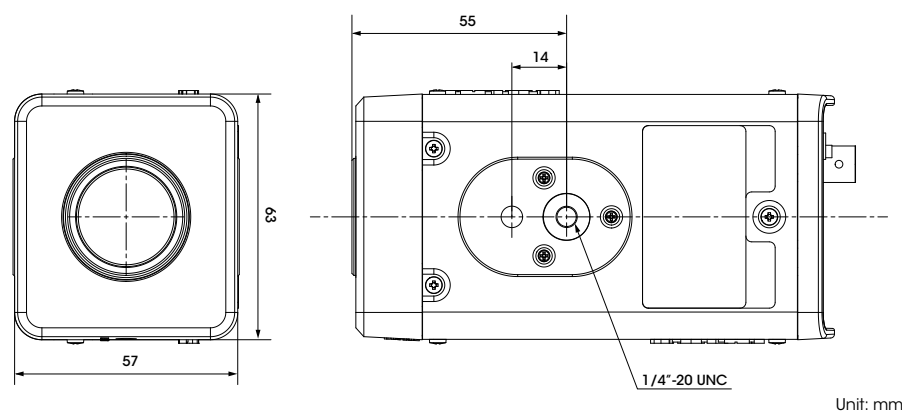
## Other Features

- Face Detection
- Custom Template (ENTRANCE, OFFICE, PARKING, SUBWAY, LOBBY, and STATION)
- User Presets
- Variable Gamma Curve
- Two Setting Modes
- DC Servo Lenses
- AC 24 V/DC 12 V operation (for SSC-G913)  
AC 220 V to 240 V operation (for SSC-G918)
- Internal Lock/Line Lock
- Slow Shutter
- Digital Zoom

## SPECIFICATIONS

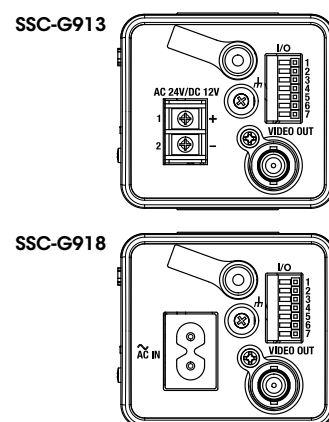
	SSC-G913	SSC-G918
Image device	1/3-type Super HAD CCD	
Picture elements (H) x (V)	752 x 582	
Signal system	PAL standard	
Horizontal resolution	540 TV lines	
S/N	Better than 50 dB (AGC OFF)	
Auto iris lens	DC servo auto	
VIDEO level	Variable	
AGC	OFF/Normal/Turbo/Manual	
Shutter	1/50 to 1/100,000 (12 steps), OFF/MANUAL/CCD-IRIS selectable	
Back-light compensation	OFF/DynaViewEX/BLC/SPOT	
Dynamic ranges	More than 75 dB	
Minimum illumination	Color: 0.6 lx at F1.2 (50 IRE, AGC ON, Turbo mode), B/W: 0.06 lx at F1.2 (50 IRE, AGC ON, Turbo mode)	
Variable gamma	OFF/SCENE1/SCENE2/SCENE3/SCENE4 selectable	
White balance	ATW/ATW-PRO/3200K/5600K/Manual	
Sharpness	SOFT/NORMAL/SHARP	
Color saturation	L to H (4 steps)	
Optical Day/Night	Auto/External/Color/B/W selectable	
Activity detection	ON/OFF selectable	
Face detection	ON/OFF selectable	
Privacy masking	ON/OFF selectable (with area setting function)	
Camera title	Up to 24 characters (Alphabet, Arabic numeral and some marks) ON/OFF selectable (with 4 prepositions)	
Use presets	A/B Reset selectable	
Custom templates	ENTRANCE/OFFICE/PARKING/SUBWAY/LOBBY/STATION	
Flip	OFF/VERT/HORIZ/BOTH selectable	
Digital noise reduction	L to H (5 steps)	
Slow shutter	OFF/x2/x4/x8/x16/x32/x64/x128/x256/x512	
Back focus adjustment	YES	
Synch system	Internal/AC line lock selectable	
RS-485 address	1-255	
Operating temperature	-10 °C to +50 °C	
Storage temperature	-40 °C to +60 °C	
Operating humidity	20 to 80%	
Storage humidity	20 to 95%	
Power requirement	DC 12 V $\pm$ 10% or AC 24 V $\pm$ 10% -40%, 50 Hz	AC 220-240 V $\pm$ 10%, 50 Hz
Power consumption	2.4 W	2.8 W
Mass	400 g	420 g
Dimensions	63 x 57 x 129.1 mm	
Supplied accessories	Operating instructions (1), Menu operations (1), Fall-prevention wire rope (1), Screw (1), Lens mount cap (1), AC power cable (AC 220-240V only)	

## DIMENSIONS



Unit: mm

## REAR PANELS



Distributed by

© 2009 Sony Corporation. All rights reserved.

Reproduction in whole or in part without written permission is prohibited. Design, features and specifications are subject to change without notice.

All non-metric weights and measures are approximate.

Sony is a registered trademark of Sony Corporation.

DynaViewEX, Super HAD CCD II is a trademark of Sony Corporation.

All other trademarks are the property of their respective owners.