

SONY®

Digital Photo Printer

UP-CR10L/1

SnapLab

YOUR ON-LOCATION PHOTOLAB



YOUR ON-LOCATION PHOTOLAB



Sony is proud to introduce the state-of-the-art UP-CR10L Digital Photo Printer, the "Snap Lab™" – stylish and undersized standalone professional photo-finishing solution. This digital photo printer is packed with a host of robust features in a highly compact body. Utilizing Sony dye sublimation technology, the "Snap Lab" can produce photo-lab-quality prints in just a few seconds. In addition, its 8-inch color LCD and user-friendly Graphical User Interface (GUI) will help you to print memorable and creative photos easily. We all know the demand for digital photo printing is expanding rapidly, and the "Snap Lab" offers an affordable and exciting opportunity to enter the new digital photo market. Its attractive features, including payment friendly features, will enhance customer satisfaction, making it the ideal choice for countless on-location applications.



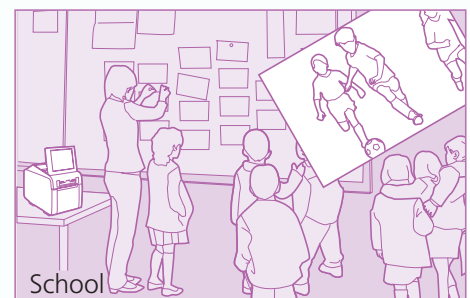
Digital Photo Printer
UP-CR10L

Application

- Photo shop
- Retail shop
- Event
- School / Day-care
- Hotel / Hospitality
- Government / Law Enforcement
- Tourism
- Rental
- Consumer



Retail shop



School



Hotel



Event

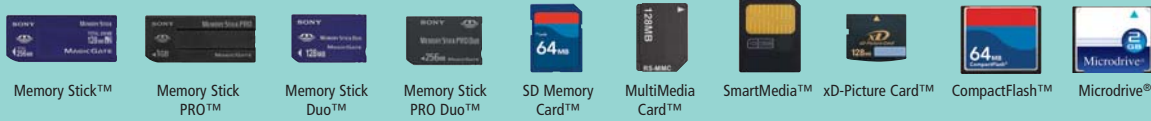


Law Enforcement



Various media inputs

The "Snap Lab" accepts today's most popular digital media.



Border composition*

The "Snap Lab" provides value-added prints by using borders to overlay preloaded logos, event names, or a custom-designed frame to your photo. The additional border designs can be created using a Microsoft Windows® or Apple Macintosh®** - based version of Adobe Photoshop®.

* Need to preload data onto a CompactFlash or Microdrive card purchased separately and insert it into the expansion slot.

** The Macintosh version of plug-in software is available for download from <http://www.sony.net/Products/DP-driver>



Multiple layouts

The "Snap Lab" offers 30 built-in templates that enable users to create anything from ID cards to novelty products and add value to each print. The additional layouts* are also available for download from <http://www.sony.net/Products/DP-driver>.

* Needs to preload data onto a CompactFlash or Microdrive card purchased separately and insert it into the expansion slot.



Bluetooth connectivity*

The "Snap Lab" can receive and then print images from Bluetooth devices such as mobile camera phones. Images are transmitted via Bluetooth and then stored in a buffer memory where they can be edited and printed in the normal way.

* Requires a USB Bluetooth Adaptor DPPA-BT1 and a CompactFlash or MicroDrive card. Both must be purchased separately. Availability of DPPA-BT1 varies depending on each sales area. Please contact your nearest Sony office or authorized dealer for detailed information.

Job ticket printing*

Snap Lab can print job tickets, which display details such as the order number, type of print, quantity, and price – and can also include a customized header and footer such as a Shop logo or barcode**.

* Requires connection to the widely used Epson TM88III/IV thermal printer.

** Needs to preload data onto a CompactFlash or Microdrive card purchased separately and insert it into the expansion slot.

Remote password Entry

In addition to authorizing an order by inputting a password on the LCD, shop staff can also start the printing process using a special memory card with a built-in password*. They simply insert it to a memory card reader** that is linked to the Snap Lab by a USB (A) connector.

* Requires a password file to be preloaded on an optional memory card.

** Requires a memory card reader purchased separately.

Quick start-up

The "Snap Lab" can be used without the need for a PC. Once the power button is pressed, the "Snap Lab" is operational within 10 seconds and is ready to print photos in any location.

Screen saver customization*

Screen saver images can be customized by preloading data. The screen can display various images such as a company logo or a special promotion when the printer is not in operation.

* Need to preload data onto a CompactFlash or Microdrive card purchased separately and insert it into the expansion slot.

Order numbering

A print log can be viewed on the LCD and exported to a CompactFlash or Microdrive card in "CSV" format. This exported data can be used as a Microsoft Excel® file on a PC. In addition, the order number can be printed, using Sony original pattern lamination technology. The numbers are barely seen from the front, but they become visible when the print is tilted. With this order number, owners can sort prints for smooth distribution.

PC and Macintosh connectivity

The "Snap Lab" is supplied with a printer driver for Windows 2000, XP Home Edition and XP Professional. This allows the user to use powerful editing functions on a PC that are not available on the printer. An Apple Macintosh driver is available for download from <http://www.sony.net/Products/DP-driver>.

Security cable compatibility

The "Snap Lab" is equipped with a security slot for protection against theft. It enables to connect to a security cable on the market.



Easy to use

The operation of the "Snap Lab" is very simple. No PC is required. With the adoption of a large 8-inch touch-sensitive color LCD and a user-friendly GUI, it is easy and comfortable to operate – users just have to insert their digital media and touch the images and buttons.



1. 2. 3.

Compact

The compact body of the "Snap Lab" enables it to fit anywhere. It features a stylish, compact footprint, and its LCD panel can be angled to accommodate a variety of viewing positions.

High speed and high quality

A newly developed thermal print mechanism enables the "Snap Lab" to operate at high speeds, regardless of print size. Printing a 9 x 13 cm (3.5 x 5 inches) photo takes approximately 13 seconds*, while a 10 x 15 cm (4 x 6 inches) photo can be printed in approximately 16 seconds*, and a 13 x 18 cm (5 x 7 inches) photo in approximately 17 seconds*. In addition to this high speed, the "Snap Lab" provides photo-lab-quality prints, utilizing Sony dye sublimation technology. It can output crisp, vibrant colors with natural, continuous tones on UV-protected archival quality paper.

*Excluding image processing time.

On-board editing features

The "Snap Lab" has a robust set of editing features built into the printer, which can be operated via its LCD panel, without the need for a PC.

Zoom / Crop & Rotate

Focus on the subject, eliminate unwanted background, and rotate picture

Color Adjustment

Adjust vibrancy

Red-Eye Reduction

Reduce unwanted red-eye easily

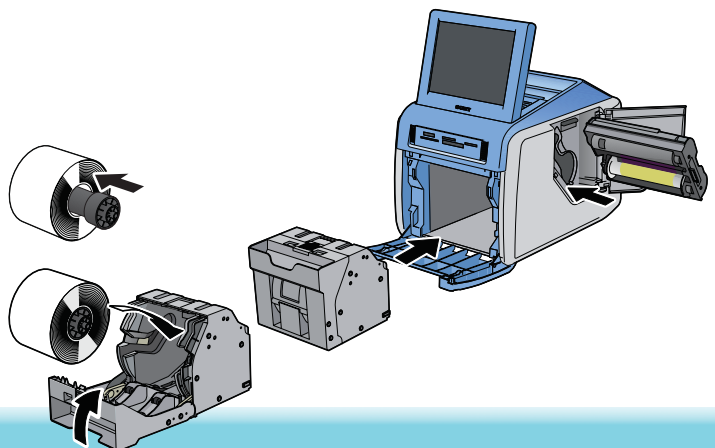
Sepia / B & W

Transform color pictures into black and white or sepia-toned images



Easy to maintain

The replacement of paper and ribbon is very simple. There are no chemicals and no special skills required.



Specifications

Printing method	Dye sublimation thermal transfer
Resolution	300 dpi
Gradation	256 levels (8 bits) each for Yellow, Cyan, Magenta
Image pixels transferred	2UPC-C15: 1536 x 2148 dots 2UPC-C14: 1248 x 1848 dots 2UPC-C13: 1100 x 1536 dots
Picture size	2UPC-C15: 127 x 178 mm (5 x 7 inches) 2UPC-C14: 102 x 152 mm (4 x 6 inches) 2UPC-C13: 89 x 127 mm (3.5 x 5 inches)
Printing time*	2UPC-C15: Approx. 17 seconds 2UPC-C14: Approx. 16 seconds 2UPC-C13: Approx. 13 seconds
Print capacity	2UPC-C15: 172 prints per roll/ribbon cartridge 2UPC-C14: 200 prints per roll/ribbon cartridge 2UPC-C13: 300 prints per roll/ribbon cartridge
Paper feed method	Roll paper, Automatic loading from paper holder
Ink supply method	Ink ribbon cartridge
Interface	
Memory card direct slots	Memory Stick x 1 (Memory Stick, Memory Stick PRO, Memory Stick Duo and Memory Stick PRO Duo compatible), SD Memory Card / MultiMediaCard x 1, CompactFlash (Type I / II) x 1, xD-Picture Card x 1, SmartMedia x 1
Expansion Slot	USB(B) x 1 for PC: Hi-Speed USB (USB 2.0)
PC connection	USB(A) x 1 for mass storage class device: USB flash memory compatible
USB host port	RS-232C (D-sub 9-pin) x 1 for future peripheral support
Expansion terminal	
Compatible image file format	JPEG: JFIF 4:4:4, 4:2:2, 4:2:0 (baseline JPEG), Exif 2.2.1 compatible, DCF 2.0 compatible/ TIFF: Exif 2.2.1 compatible (TIFF-RGB non compressed)/ BMP: 24 bit Windows format (Some versions of the file formats may not be compatible)
LCD display	8-inch touch sensitive TFT color display
Print order when print from memory cards	Selected image, All image, Index, Border Composition, Split Image
Image adjustment	Crop, Color adjust, Filter (Sepia, B&W)
Power requirements	100 to 240 V AC, 50/60 Hz, 3.0 to 1.3 A
Operating temperature range	5 °C to 35 °C (41 °F to 95 °F)
Operating humidity range	20% to 80%
Dimensions (W x H x D)	Approx. 275 x 300 x 380 mm (10 7/8 x 11 7/8 x 14 15/16 inches) (excluding extruding parts, approx. 555 mm (21 7/8 inches) in depth with paper tray)
Mass	Approx. 11 kg (24 lb 4 oz) excluding the 0.16 kg (5.6 oz) paper tray
Safety standards	UC Version: UL60950-1, CSA C22.2 No.60950-1 CE Version: EN60950-1
Bundled	Printer driver for Microsoft Windows 2000, XP Professional, XP Home Edition
Supplied accessories	Paper tray (1), Paper holder (1), Paper core (1), Adaptor (left, 1), Adaptor (right, 1), Power Cord (1), Cleaning cartridge(1), Ferrite core(1), CD-ROM (driver software, PDF files of multi-language manuals) (1), Software License Agreement (1), Operating Instructions (1), Warranty Card (1), Service and Customer Support Info. (1)

*Excluding image processing time

Self-Laminating Color Printing Pack



2UPC-C15

Paper size : 127 x 178 mm
(after print) (5 x 7 inches)
Contents : Paper roll for 172 prints x 2
Ribbon cartridge x 2



2UPC-C14

Paper size : 102 x 152 mm
(after print) (4 x 6 inches)
Contents : Paper roll for 200 prints x 2
Ribbon cartridge x 2



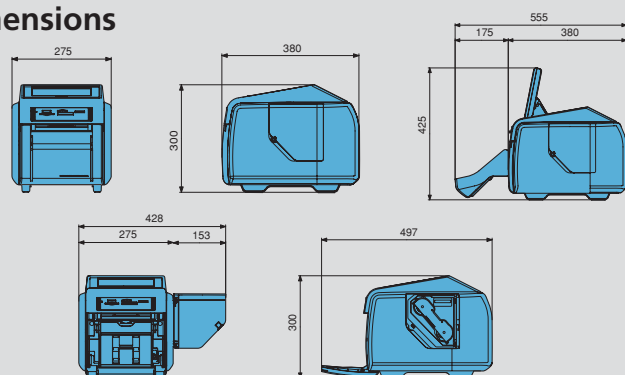
2UPC-C13

Paper size : 89 x 127 mm
(after print) (3.5 x 5 inches)
Contents : Paper roll for 300 prints x 2
Ribbon cartridge x 2



UPA-CPH1 Paper Holder

Dimensions



Rear View

Distributed by

© 2007 Sony Corporation of Hong Kong Ltd. All rights reserved.
Reproduction in whole or in part without written permission is prohibited.
Features and specifications are subject to change without notice.
All non-metric weights and measurements are approximate.
Sony is a registered trademark of Sony Corporation.
Microsoft and Windows are registered trademarks of Microsoft Corporation.
Adobe and Photoshop are either registered trademarks or trademarks of Adobe Systems Incorporated in the United States and/or other countries.
Memory Stick, Memory Stick Duo, Memory Stick PRO, and Memory Stick PRO Duo are trademarks of Sony Corporation.
SD Memory Card is a trademark of Matsushita Electric Industrial Co., Ltd., SanDisk Corporation in the USA and Toshiba Corporation.
MultiMediaCard is a trademark of Infineon Technologies AG.
SmartMedia is a trademark of Toshiba Corporation.
xD-Picture Card is a trademark of Fuji Photo Film Co., Ltd.
CompactFlash is a trademark of SanDisk Corporation.
Microdrive is a registered trademark of Hitachi Global Storage Technologies.
Snap Lab is a trademark of Sony Corporation.
All other trademarks are the property of their respective owners.